

MONTHLY MEMBERSHIP PROGRESS REPORT

District 33 S

Results as of: 9/30/2025

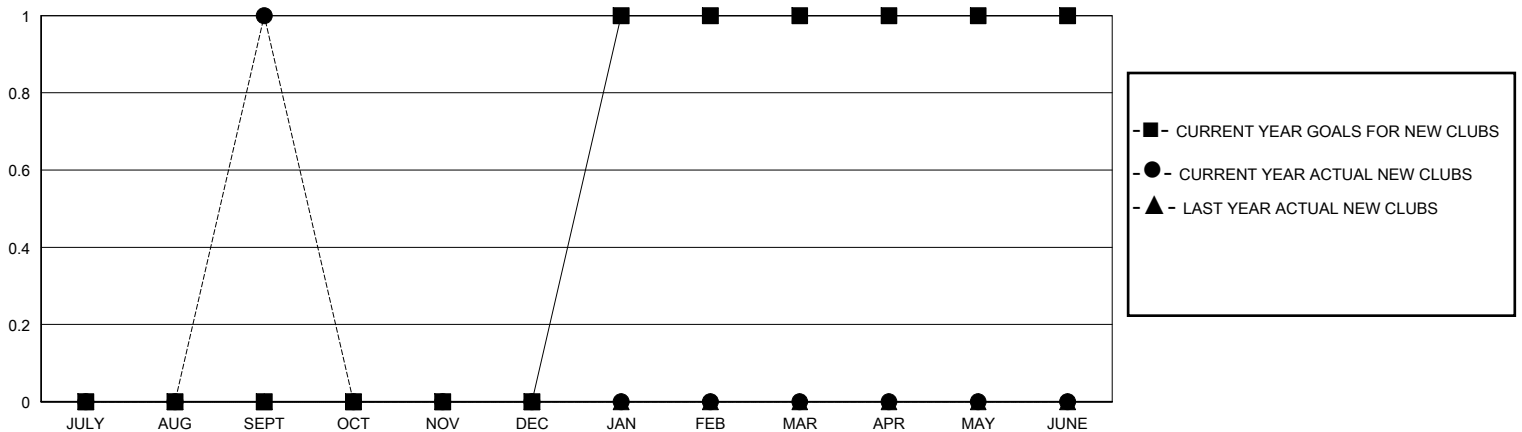
GMT:

LOCATION MASSACHUSETTS

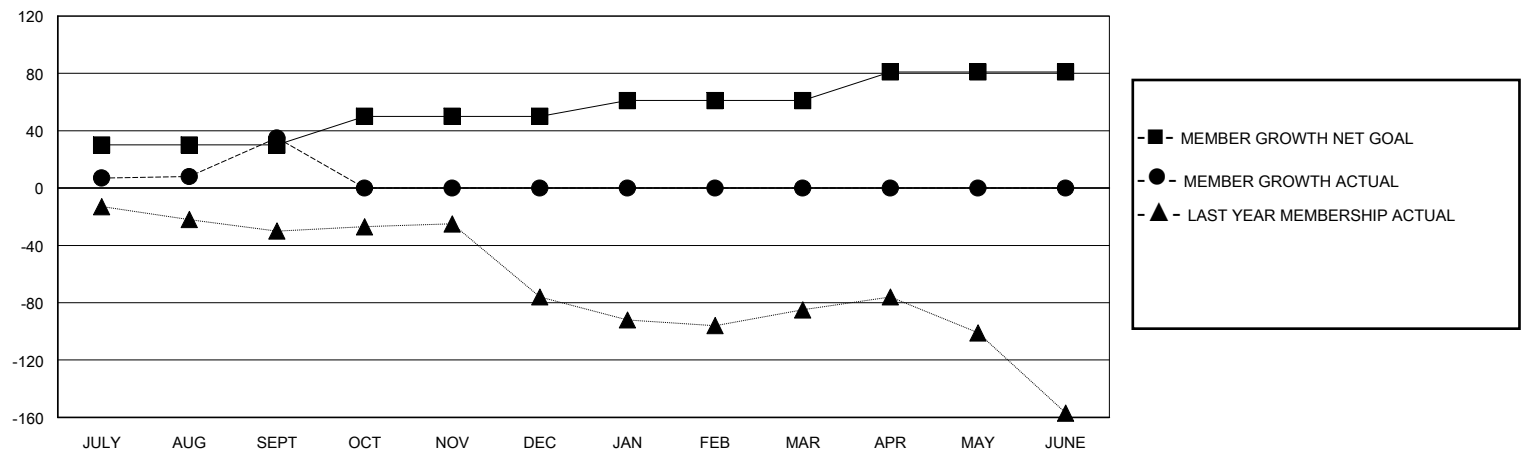
GMT CA

Clubs				Members			
RESULTS FOR 2025-2026				RESULTS FOR 2025-2026			
QUARTER	NEW CLUB GOAL	NEW CLUBS	DROPPED CLUBS	QUARTER	MEMBER GROWTH NET GOAL	MEMBER GROWTH ACTUAL	DROPPED MEMBERS ACTUAL (including transfers)
JULY/AUG/SEPT	0	1	0	JULY/AUG/SEPT	30	64	27
OCT/NOV/DEC	0	0	0	OCT/NOV/DEC	20	0	0
JAN/FEB/MAR	1	0	0	JAN/FEB/MAR	11	0	0
APR/MAY/JUNE	0	0	0	APR/MAY/JUNE	20	0	0

GOALS AND ACTUAL NEW CLUBS CUMULATIVE



GOALS AND ACTUAL MEMBERS CUMULATIVE



DROPPED CLUBS: 0

12 CLUBS OF 47 ADDED 1 OR MORE NEW MEMBERS

GENDER DISTRIBUTION

MALE 840 (59.53%)
FEMALE 570 (40.40%)

DROPPED MEMBERS

DECEASED	9
CLUB CANCELLED	0
OTHER	18
TOTAL	27

[CLICK HERE FOR CUMULATIVE MEMBERSHIP DATA](#)

TOTAL FAMILY UNIT MEMBERS	231
FAMILY MEMBERS PAYING HALF DUES	116